

## POWERGEAR HIGHSPEED DATA SHEET S-170



L Series



KL Series



H Series



KH Series

### Specifications:

Ratio:	1:1	1.5:1	2:1
Nominal output torque:	360 Nm	360 Nm	330 Nm
Acceleration torque:	540 Nm	540 Nm	495 Nm
Emergency torque:	720 Nm	720 Nm	660 Nm
Input speed:	2000 rpm	2600 rpm	2600 rpm
Max input speed (Special measures on request)	4000 rpm	4000 rpm	4000 rpm
Standard output backlash:	≤ 12 arcmin	≤ 12 arcmin	≤ 12 arcmin
Reduced output backlash:	≤ 7 arcmin	≤ 7 arcmin	≤ 7 arcmin
Permissible radial load*: (Output)	4500 N	4500 N	4500 N
Permissible radial load*: (Input)	3500 N	3500 N	3500 N
Permissible axial load*: (Output)	2250 N	2250 N	2250 N
Permissible axial load*: (Input)	1750 N	1750 N	1750 N
Efficiency at max load:	>98%	>98%	>98%
Running noise at 1500rpm, partial load	≤ 77db(A)	≤ 77db(A)	≤ 77db(A)
Weight:	22.0 kg	22.0 kg	22.0 kg
Service life:	>15,000h	>15,000h	>15,000h
Oil quantity:	1.0 litres	1.0 litres	1.0 litres
Operating temperature:	-30°C to 100°C	-30°C to 100°C	-30°C to 100°C
Mass moments of inertia related to input for shaft arrangement 13:	31.6 kg/cm <sup>2</sup>	19.6 kg/cm <sup>2</sup>	13.8 kg/cm <sup>2</sup>

\*At centre of shaft

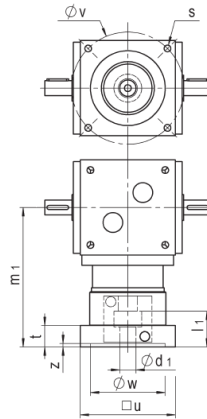
### Order code:

S-	170-	2-	3-	4-	5-	6-	7
----	------	----	----	----	----	----	---

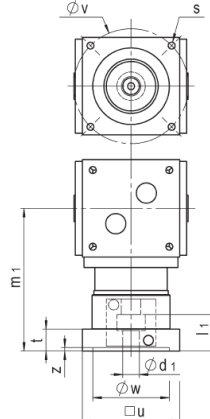
2:	Version:	L = solid shaft version; KL = solid shaft version with input flange H = hollow shaft version; KH = hollow shaft version with input flange
3:	Ratio:	1:1; 1.5:1; 2:1
4:	Shaft arrangement:	WA 1; WA 3; WA 13
5:	Mounting position:	MP1; MP2; MP3; MP4; MP5; MP6
6:	Input speed:	Up to 8500 min <sup>-1</sup>
7:	Special requirements:	As specified

## Dimensions

<b>a:</b>	<b>170mm</b>
<b>b dia:</b>	<b>165mmh7</b>
<b>c dia:</b>	<b>128mm</b>
<b>d1 dia:</b>	<b>32mmk6</b>
<b>l1:</b>	<b>50mm</b>
<b>d2 dia:</b>	<b>32mmk6</b>
<b>d3 dia:</b>	<b>32mmH7</b>
<b>l2:</b>	<b>50mm</b>
<b>l3:</b>	<b>85mm</b>
<b>l4:</b>	<b>50mm</b>
<b>e:</b>	<b>85mm</b>
<b>f1:</b>	<b>205mm</b>
<b>f2:</b>	<b>149mm</b>
<b>g1:</b>	<b>15mm</b>
<b>g2:</b>	<b>12mm</b>
<b>h:</b>	<b>70mm</b>
<b>k:</b>	<b>M12x23mm</b>
<b>m1:</b>	<b>155mm</b>
<b>m2:</b>	<b>99mm</b>
<b>n1:</b>	<b>2mm</b>
<b>n2:</b>	<b>2mm</b>
<b>p:</b>	<b>67mm</b>
<b>r1:</b>	<b>M12</b>
<b>r2:</b>	<b>M12</b>
<b>s:</b>	<b>6xM8x16</b>
<b>t:</b>	<b>10mm</b>
<b>u dia:</b>	<b>127mmg6</b>
<b>v dia:</b>	<b>114mm</b>
<b>Key d1:</b>	<b>10x8x45mm</b>
<b>Key d2:</b>	<b>10x8x45mm</b>
<b>Z:</b>	<b>6mm</b>

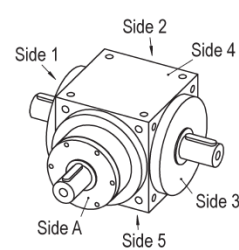
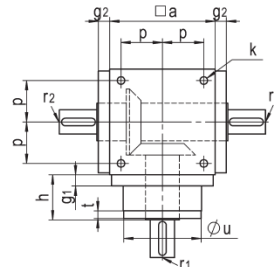
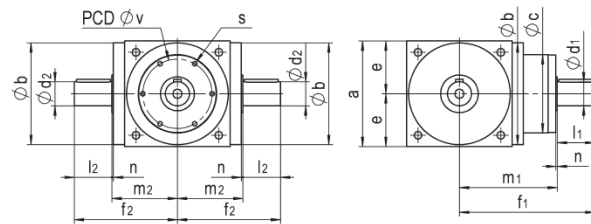


Design KL

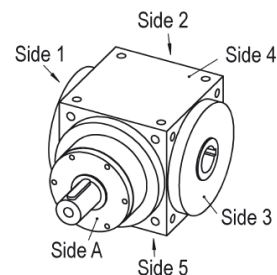
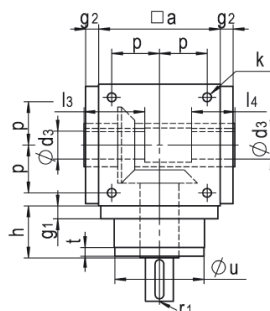
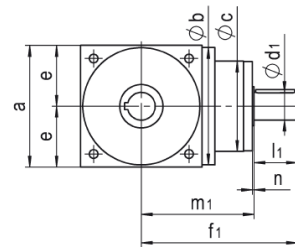
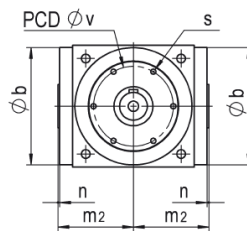


Design KH

### Configuration L

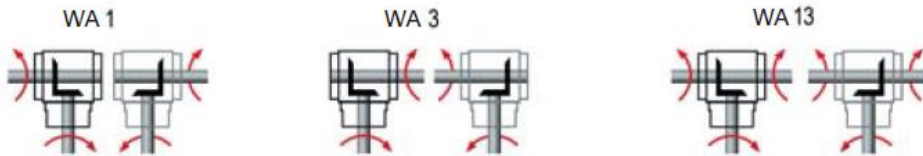


### Configuration H



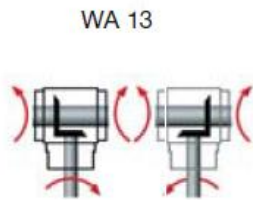
### Shaft arrangements L:

*always right view = mirrored illustration*

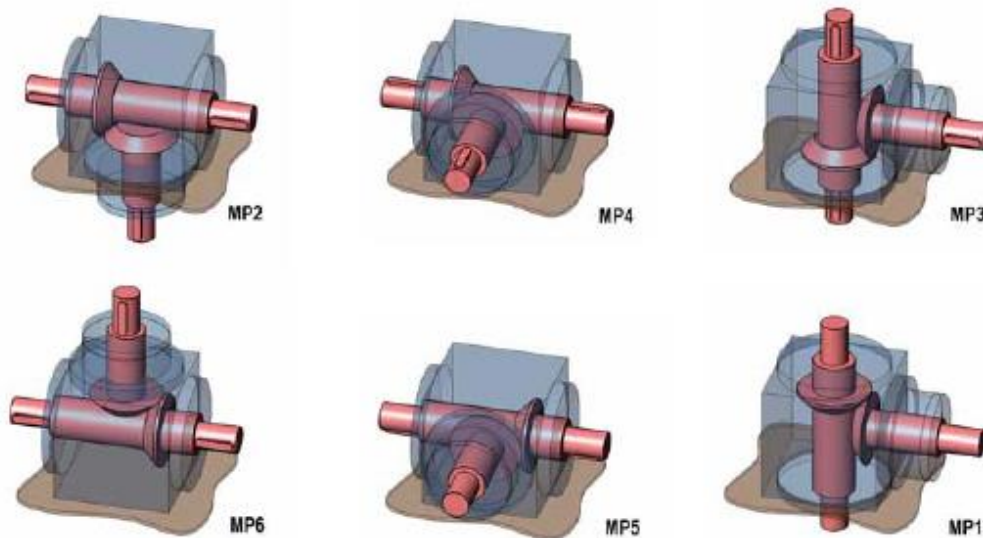


### Shaft arrangements H:

*right view = mirrored illustration*



### Mounting positions:



For full specifications, see PowerGear catalogue.

Size	Variant	Ød1	l1	□u	Øv	Øw <sup>F7</sup>	s	m <sub>1</sub>	t	z
<b>S90</b>	V1	11	26	90	75	60	M5	166.5	25	5
	V2	14	30	90	75	60	M5	166.5	25	5
	V3	14	30	90	95	70	M6	166.5	25	5
	V4	14	30	90	100	80	M6	166.5	25	5
	V5	19	40	90	95	70	M6	166.5	25	5
	V6	19	40	90	100	80	M6	166.5	25	5
	V7	19	40	115	130	95	M8	166.5	25	5
	V8	19	40	115	115	95	M8	166.5	25	5
	V9	24	50	115	130	110	M8	173	31.5	5
<b>S110</b>	V1	14	30	110	95	80	M6	184.5	26	5
	V2	14	30	110	100	80	M6	184.5	26	5
	V3	19	40	110	100	80	M6	184.5	26	5
	V4	19	40	115	115	95	M8	188	29.5	5
	V5	19	40	115	130	95	M8	188	29.5	5
	V6	19	40	115	130	110	M8	190	31.5	5
	V7	24	50	115	130	110	M8	190	31.5	5
	V8	24	50	140	165	110	M10	190	31.5	5
	V9	24	50	140	165	130	M10	205	21.5	5
	V10	32	60	140	165	130	M10	205	21.5	5
<b>S140</b>	V1	19	40	115	115	95	M8	203	29.5	5
	V2	19	40	115	130	95	M8	203	29.5	5
	V3	24	50	115	130	110	M8	205	31.5	5
	V4	24	50	140	165	110	M10	205	31.5	5
	V5	24	50	140	165	130	M10	220	21.5	5
	V6	32	60	140	165	130	M10	220	21.5	5
	V7	32	60	190	215	130	M12	221	22.5	6
	V8	32	60	190	215	180	M12	235	36.5	6
	V9	38	80	190	215	180	M12	235	36.5	6
<b>S170</b>	V1	24	50	140	165	110	M10	241	28.5	5
	V2	24	50	140	165	130	M10	244	31.5	5
	V3	32	60	140	165	130	M10	244	31.5	5
	V4	32	60	190	215	130	M12	262.5	26.5	6
	V5	32	60	190	215	180	M12	264	28	6
	V6	38	80	190	215	180	M12	264	28	6