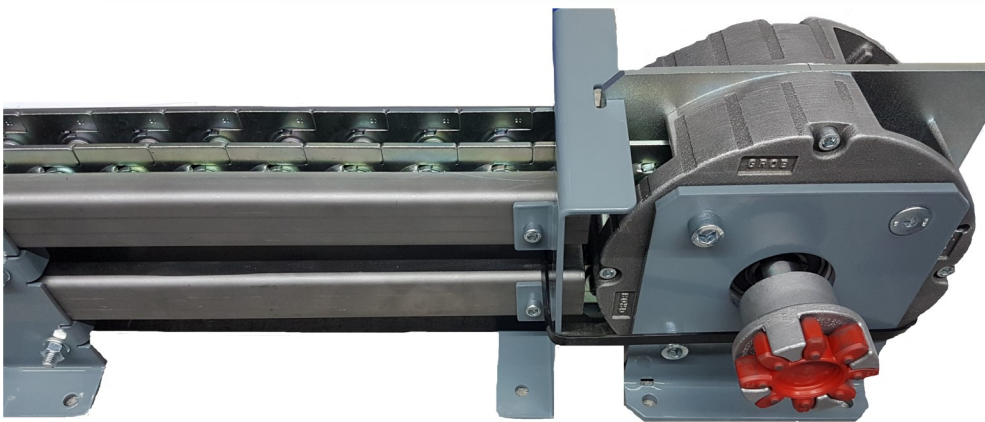


LinearMule



IN THIS ISSUE

LinearMover	1
AuContent	2
Type	4

LINEARMULE

The LinearMule is a further development of the LinearChain as a complete unit.

This you can us vertical or horizontal.

Bitte Please contact our competent team. Tel: +49 (0)7261 9263-0

Content

Material

Material Standard:	max. 15 cycles per hour, 16h a day
Material harden:	Link harden, if necessary bolts coated -> better life time balance
Material warmfest:	Oven application
Material Stainless steel:	aggressive environmental conditions (gasiform)

Characteristics

Speed

At a speed higher than 50mm/sec you have to use generally a frequency converter.
(START / STOP-Ramp)

size 25 (SK03/SK04) 200mm/sec
size 40 (SK08/SK12) 400mm/sec
size 60 (SK18/SK25/SK35) 600mm/sec

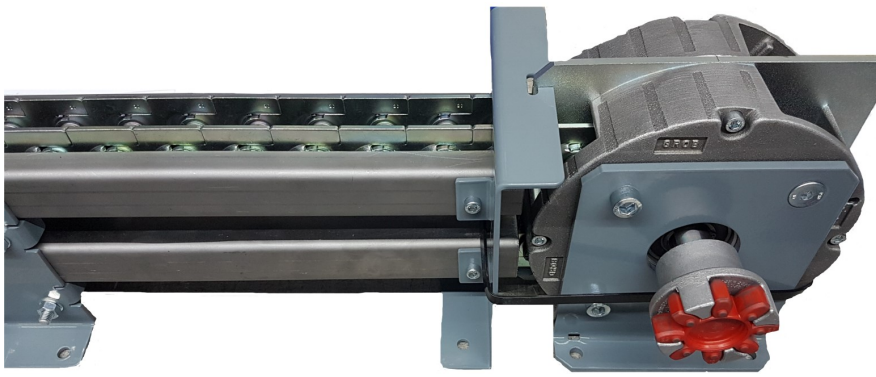
Maximum environmental temperature

Standard +180°C
Warmfest +550°C for 1 minute +1050°C

Optional

Special front link or guided sleigh for better connection to the load

Permanent lubrication system for continuous lubrication without any problems. Please organize the exchange of the lubrication tank in time. (every 500 cycles)

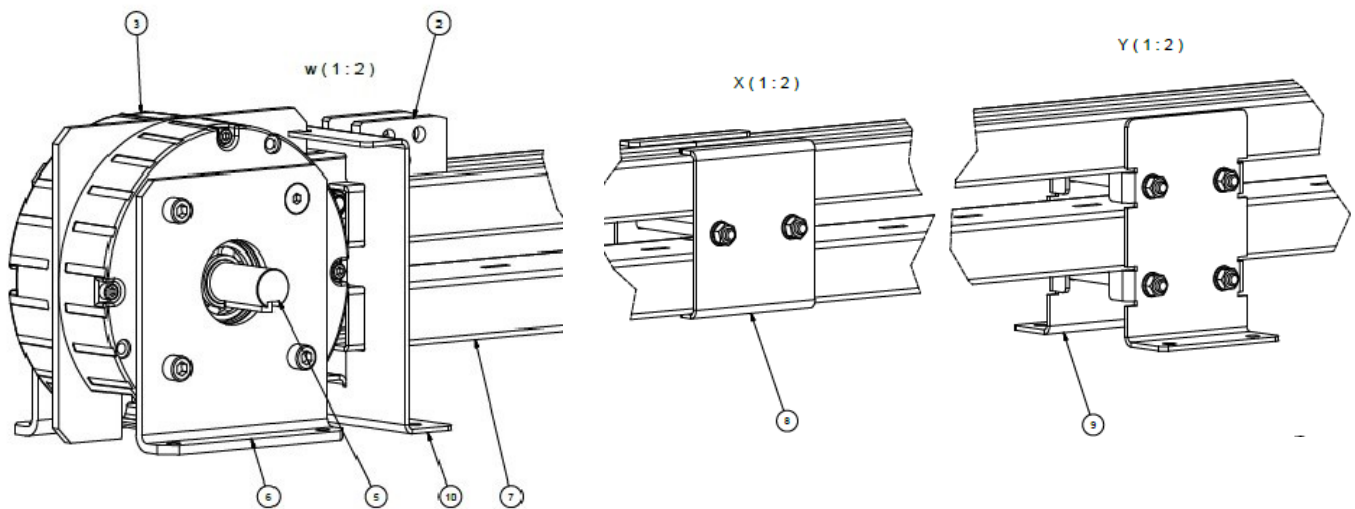


Cause of the space saving construction the guiding rails can be realised for guiding and stroge of the LinearChain in the dimension of the drive housing. With the mounting brackets you can align the system in a easy way.

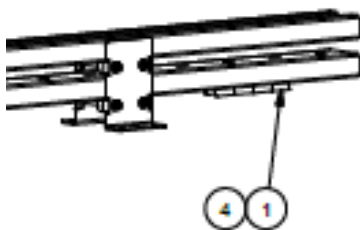
The guiding rails can be extended very easy over the adaptationner without any problems.

Over the standard front link you can connect the load to the LinearChain. Or you use a special front link or a guided sleigh at your customers request. The guided sleigh will be guided inside the guiding rails.

The holder of the guiding rails and drive housing will make it easy for you to align the system. werden kann. The right allignment will increase the life time balance.



- | | | | |
|---|--------------------|----|-------------------------------------|
| 1 | Standard Link | 7 | Guiding Rails |
| 2 | Special Front Link | 8 | Adaptationner Guiding Rails |
| 3 | Drive Housing | 9 | Holder Guiding Rails |
| 4 | Endshaft | 10 | Adaptationner Guiding Rails—Housing |
| 5 | Drive Shaft | | |
| 6 | Mounting Bracket | | |



Types

Type	Load	Partition	Needed torque at max. static load
LinearMule SK03G-	3kN	25mm	129Nm
LinearMule SK08G-	8kN	40mm	420Nm
LinearMule SK18G-	18kN	60mm	1415Nm
LinearMule SK25G-	25kN	60mm	1965Nm
LinearMule SK35G-	35kN	60mm	2750Nm

Standard length

2000mm	2500mm	3000mm	3500mm	4000mm	4500mm
5000mm	6000mm	7000mm	8000mm	9000mm	10000mm

Special length at request

Material

Standard	Link zinc plated	Bolts harden	Rolls harden	Standard Parts Standard
Warmfest	Link stainless steel	Bolts stainless steel	Rolls stainless steel	Standard Parts Standard
EStainless steel	Link stainless steel	Bolts stainless steel	Rolls stainless steel	Standard Parts stainless steel

For use of stainless steel you have to reduce the load –30%. Please add the needed additional safety factors to your calculation.

Orientation

LinearMule

horizontal	move forward and back
vertical	lift and lower

Drive shaft

A	left
B	right
A+B	Both sides

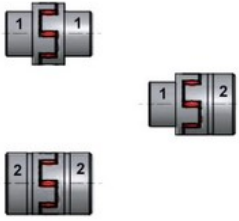
Assembling

2F	horizontal
6F	vertical

Option

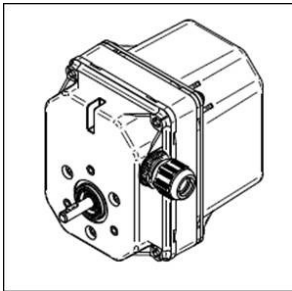
Couplings

for use together with motor and cam switch



Cam switch

limit switch function



Geared brake motor



Grob GmbH Antriebstechnik.

Since 1945 successful at the market

Screw Jack MJ/BJ

Screw Jack Classic

High Speed Screw Jack

High Performance Screw Jack HMC

Electric Cylinder / Flexline

Linear Actuator Mini

LinearChain

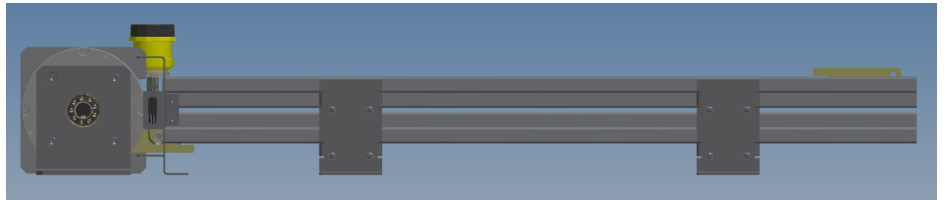
Linear Actuator

Spindle + nut

Wage work

www.grob-antriebstechnik.de

info@grob-antriebstechnik.de



GROB GmbH Antriebstechnik

Eberhard Layher Straße 5-9
D-74889 Sinsheim

www.grob-antriebstechnik.de
info@grob-antriebstechnik.de

Fon: +49 (0)7261 9263 -0
Fax: +49 (0)7261 9263-33
E-Mail: sales@grob-antriebstechnik.de